

BLUEMAX THE NEW HIGH-EFFICIENCY THERMAL INCINERATOR BURNER FROM EISENMANN

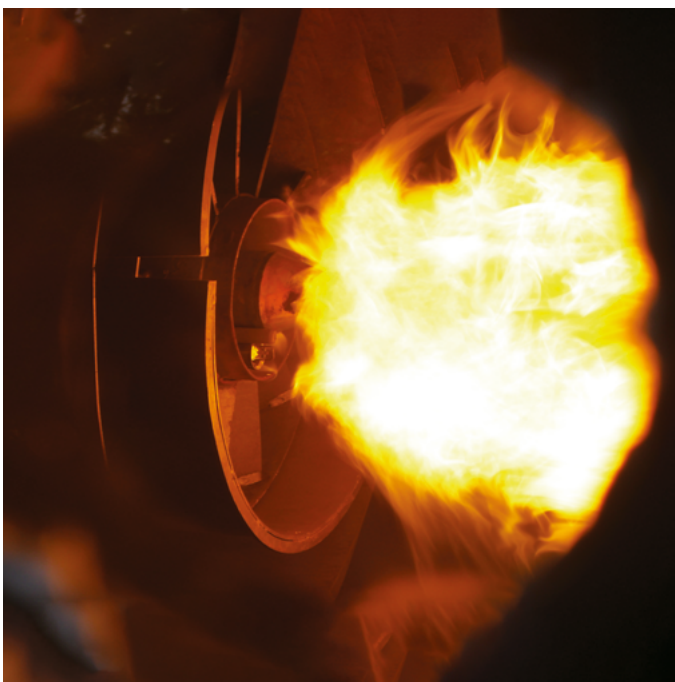
The latest development by EISENMANN optimizes your thermal incineration with lower energy consumption and greater environmental benefit. BLUEMAX can also be retrofitted in older plants. Its advantages are essentially as follows:

- Combustion chamber temperature up to 30 °C lower
- Reduced gas and electricity consumption
- Longer service life for combustion chamber and burner
- Better clean gas values for CO and NOx
- The environment benefits, since CO₂ is reduced and CO, TOC and NOx are also minimized.

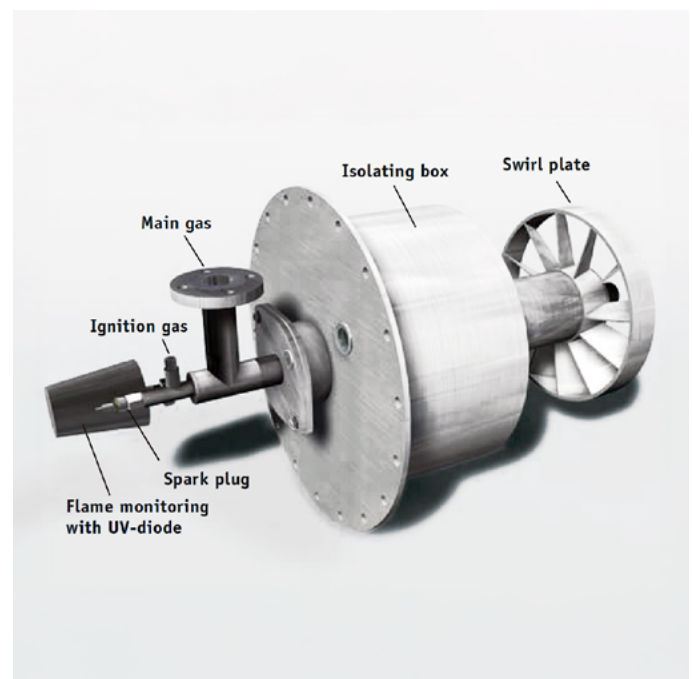
The advantages of BLUEMAX are due to an improved swirl burner and an innovative burner lance.

The optimized flame geometry ensures excellent combustion inside the combustion chamber.

Turbulences caused by the new manner in which gas is guided in the BLUEMAX ensure that exhaust air and fuel gas are mixed more thoroughly and achieve exceedingly good oxidation of the hydrocarbons. Very good homogenization of the gases results in considerably better CO values.



Flame pattern of the BLUEMAX burner from EISENMANN



The newly developed BLUEMAX burner from EISENMANN for thermal incinerators

BLUEMAX

THE NEW HIGH-EFFICIENCY THERMAL INCINERATOR BURNER FROM EISENMANN

Lowering the temperature in the combustion chamber by up to 30 °C leads to a corresponding reduction in gas consumption and significantly reduces NOx emissions. A longer service life can also be assumed for the plant as a whole, due to the lower thermal stress.

The flow rate of the fuel gas can be adjusted at the BLUEMAX gas nozzle. Depending on the exhaust air load and required clean gas values, the new burner lance can therefore be adapted quickly and easily to each customer's specific requirements.

EISENMANN also uses BLUEMAX for exhaust air with low oxygen levels. In this case, complete combustion is assured by the addition of external air.

From now on, EISENMANN will equip all thermal incinerators exclusively with the new high-efficiency BLUEMAX burner system.

BLUEMAX is also ideal for retrofitting in existing plants. Installation is simple and the advantages speak for themselves:

- Energy input in the form of gas and electricity is reduced despite the improvement in clean gas values.
- Lower operating costs lead to shorter amortization periods.



Thermal oxidation plant in the automotive industry

EISENMANN

Environmental Technology

Eisenmann Environmental Technology GmbH | Max-Eyth-Straße 42 | 71088 Holzgerlingen | Germany
Tel.: +49 7031 44809-0 | office@eisenmann-environmental.com | www.eisenmann-environmental.com

2026 © Eisenmann Environmental Technology GmbH

Alle Rechte vorbehalten. Sämtliche Texte, Bilder und Grafiken unterliegen dem Urheberrecht und anderen Gesetzen zum Schutz des geistigen Eigentums. Eine Nutzung der Inhalte ist erst nach Zustimmung durch die Eisenmann Environmental Technology GmbH gestattet. Sämtliche Angaben, Beschreibungen und Illustrationen stehen unter dem Vorbehalt technischer Änderungen, insbesondere in Hinblick auf die Weiterentwicklung unserer Produkte nach dem jeweiligen Stand der Technik. Eine besondere Ankündigung bei Änderungen von Angaben, Beschreibungen und Illustrationen erfolgt nicht. Einzelne Fehler bleiben vorbehalten. Technische Eigenschaften können von Land zu Land abweichen.